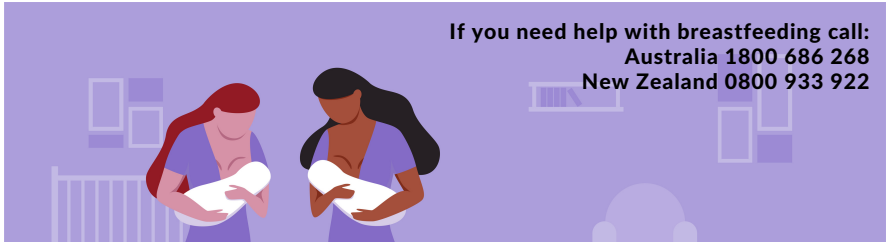




# COVID-19 vaccine and breastfeeding

**At this time the Australian and New Zealand Governments support the use of an approved COVID-19 vaccination in breastfeeding women. Breastfeeding women do not need to stop breastfeeding to receive the vaccine.**



**If you need help with breastfeeding call:  
Australia 1800 686 268  
New Zealand 0800 933 922**

**There is no evidence of additional risks to breastfeeding women or their children from an approved COVID-19 vaccine. COVID-19 vaccines approved for use in Australia and New Zealand do not contain a live virus.**

**Prior to receiving the COVID-19 vaccination it is important that breastfeeding women discuss the COVID-19 immunisation with their health professional.**

**Research shows that antibodies made by a mother's body after having COVID-19 are available to her child via her breastmilk.**

**Links to further information:**

[www.health.gov.au/resources/publications/covid-19-vaccination-covid-19-vaccination-decision-guide-for-women-who-are-pregnant-breastfeeding-or-planning-pregnancy](http://www.health.gov.au/resources/publications/covid-19-vaccination-covid-19-vaccination-decision-guide-for-women-who-are-pregnant-breastfeeding-or-planning-pregnancy)  
[www.health.govt.nz/our-work/diseases-and-conditions/covid-19-novel-coronavirus/covid-19-vaccines/covid-19-getting-vaccine/covid-19-who-can-get-vaccine#pregnant](http://www.health.govt.nz/our-work/diseases-and-conditions/covid-19-novel-coronavirus/covid-19-vaccines/covid-19-getting-vaccine/covid-19-who-can-get-vaccine#pregnant)  
[www.who.int/news-room/q-a-detail/coronavirus-disease-\(covid-19\)-vaccines-safety](http://www.who.int/news-room/q-a-detail/coronavirus-disease-(covid-19)-vaccines-safety)  
[www.ncbi.nlm.nih.gov/pmc/articles/PMC7586930/](http://www.ncbi.nlm.nih.gov/pmc/articles/PMC7586930/)

**For more information visit: Australia | [www.breastfeeding.asn.au/bfinfo/covid-19](http://www.breastfeeding.asn.au/bfinfo/covid-19)  
New Zealand | [www.babyfriendly.org.nz/resource/finding-support/](http://www.babyfriendly.org.nz/resource/finding-support/)**



**Breastfeeding Helpline  
1800 mum 2 mum  
1800 686 268**



**The Royal Australian and New Zealand College of Obstetricians and Gynaecologists**  
*Excellence in Women's Health*