

To the Point

HNELHD Immunisation Newsletter

February 2022

CONTENTS

- 2022 Annual Immunisation Update
- Covid-19 safety data
- ATAGI recommendations for Spikevax (Moderna)
- Reminder—Reporting adverse events following Immunisation
- New resource to improve childhood vaccination rates
- Surgery and vaccination timing
- NCIRS Webinar information
- 2022 Influenza Eligibility
- Links
- HNE LHD Child Immunisation Rates

ATTACHMENTS

- Immunisation Update Webinar flyer

Contact your PHU for Immunisation enquiries

Phone: 1300 066 055

Fax: 4924 6490

Email: HNELHD-PHImmunisation@health.nsw.gov.au



Immunisation Update Online Webinar

WHEN: Tuesday 1st March 2022, 6:30 pm – 9:00 pm

WHERE: Online via Livestream

SPEAKERS: Chris Staples, Jody Stephenson, Paula Taylor, Sharon Saxby, Rebecca Johnson, Patrick Cashman (HNELHD Public Health)

WHO: All Authorised Immunisers, General Practitioners & Practice Staff in the Hunter New England Region [2022 Annual Immunisation Update Tickets, Tue 01/03/2022 at 6:30 pm | Eventbrite](#) Free event .

Recording available to watch later and new sessions available later in the year.

AusVaxSafety has now published COVID-19 vaccine safety data for the following population groups:

- ▶ [People affected by cancer and transplant recipients](#)
- ▶ [Pregnant people](#)
- ▶ [Dose 3/booster](#)

These data provide individuals with a short-term adverse event profile of what to expect in the days following COVID-19 vaccination and are a great resource to assist immunisation providers when counselling patients or answering questions regarding COVID-19 vaccination.

ATAGI recommendations on the use of Spikevax (Moderna) COVID-19 vaccine in children aged 6 to 11 years

ATAGI currently recommends COVID-19 vaccination of children aged 5-11 years with paediatric Comirnaty (Pfizer COVID-19 vaccine for children).

On 17 February 2022, Spikevax (the Moderna COVID-19 vaccine) was provisionally approved by the Therapeutic Goods Administration (TGA) for a two-dose schedule of 50µg per dose in 6 to 11 year old children.

[ATAGI recommendations on the use of Spikevax \(Moderna\) COVID-19 vaccine in children aged 6 to 11 years | Australian Government Department of Health](#)

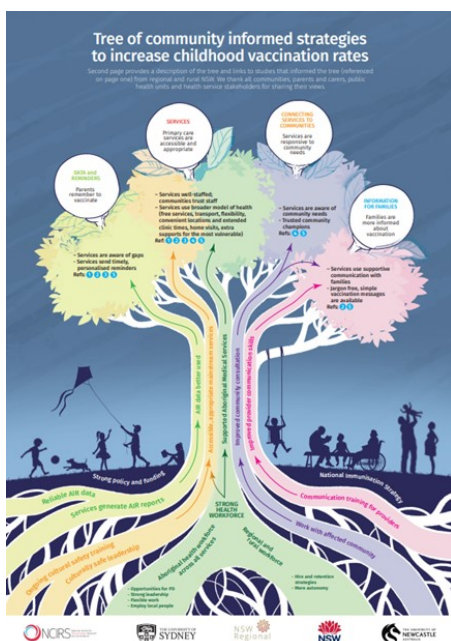
Reminder – reporting adverse events following immunisation (AEFI)

An adverse event following immunisation (AEFI) is a [notifiable condition](#) under the NSW Public Health Act (2010). **All uncommon, unexpected, or serious AEFIs must be notified by health professionals** to the local Public Health Unit (PHU). The best way to do this is to complete the [national AEFI reporting form](#) and email HNELHD-PopHealthAEFI@health.nsw.gov.au.

WHY: Monitoring vaccine safety ensures vaccines continue to be safe for use in Australia.

WHAT: Any symptoms that are unusual, unexpected or resulted in hospitalisation.

The public health unit investigates suspected AEFIs, reports to the TGA and provides advice to the reporting immunisation provider with recommendations for future vaccines.



New resource to improve childhood vaccination rates

The 'Tree of community informed strategies to increase childhood vaccination rates' resource presents practical strategies for health services to improve childhood vaccination rates in communities that may generally support vaccination, but experience socio-economic disadvantage and access barriers to immunisation services.

The 'tree' may also be used by communities to start a conversation about what makes it difficult or easy to get children vaccinated on time in their community, and advocate for changes.

Immunisation stakeholders across Australia are invited to use and adapt the 'tree' to their local needs, when designing tailored strategies to help more families get their children vaccinated on time.

[New resource to improve childhood vaccination rates | NCIRS](#)

Surgery and Vaccination Training

General principles for timing administration of vaccines, including for COVID-19, around surgeries are in the [Australian Immunisation Handbook](#).

Recent or imminent surgery is not a contraindication to vaccination, and vice versa.

Schedule COVID-19 vaccination at least one week before or after surgeries. This will reduce the chance that adverse events following the vaccination (such as fever) are attributed as surgical complications (such as wound infection).

If you suspect possible TTS in the 42 days after vaccination (for example, thrombocytopenia on pre-operative screen), you should perform investigations for TTS. You should defer surgery until either:

- TTS is ruled out, or
- the patient recovers fully from confirmed TTS

[Additional clinical considerations for COVID-19 vaccination | Australian Government Department of Health](#)

NCIRS webinar**Living with COVID-19: Getting back to immunisation business as usual**Thursday 3 March 2022
12:00 – 1.30pm AEDT

The first NCIRS webinar for 2022 and reflect on where we are and where we are headed as we move into the third year of

- an update on Australian COVID -19 vaccine recommendations
- COVID-19 and routine immunisation programs regionally and globally – what's needed
- new COVID-19 vaccines – do we need to change our strategy in response to new variants?

[Upcoming webinar | Living with COVID-19: Getting back to immunisation business as usual | NCIRS](#)

**2022
INFLUENZA
SEASON****Eligibility for 2022 influenza vaccines through the NIP****Remains unchanged for 2022 and includes:**

- children from 6 months to less than 5 years of age
- adults aged 65 years and over
- Aboriginal and Torres Strait Islander people aged 6 months and over
- pregnant women (during any stage of pregnancy)
- people aged 6 months and over with medical conditions which increase the risk of complications.

Early advice

Further information and resources about 2022 NIP seasonal influenza vaccines available from [2022 influenza vaccination – early advice for vaccination providers | Australian Government Department of Health](#)

Links:

Novavax resources A number of resources have been developed or amended ahead of the Nuvaxovid (Novavax) COVID-19 vaccine being available through a limited number of NSW Health sites.

[Management of COVID-19 Vaccine Nuvaxovid \(Novavax\) from refrigerator to administration](#)

COVID-19 vaccination: information for NSW Health immunisation providers

[NSW Health Immunisation Providers COVID-19 webpage.](#)

Medical exemption form - From 25 February 2022, the Australian Immunisation Register - [immunisation medical exemption form \(IM011\)](#) is the only approved form in NSW to provide evidence of a medical contraindication to COVID-19 vaccination.

Amended guidelines

[Standard operating procedure for administration of COVID-19 vaccines in NSW vaccination clinics](#)

[Statewide Protocol for the Supply or Administration of COVID-19 Vaccine \(Amended\)](#)

[NSW Pharmacist Vaccination Standards](#)