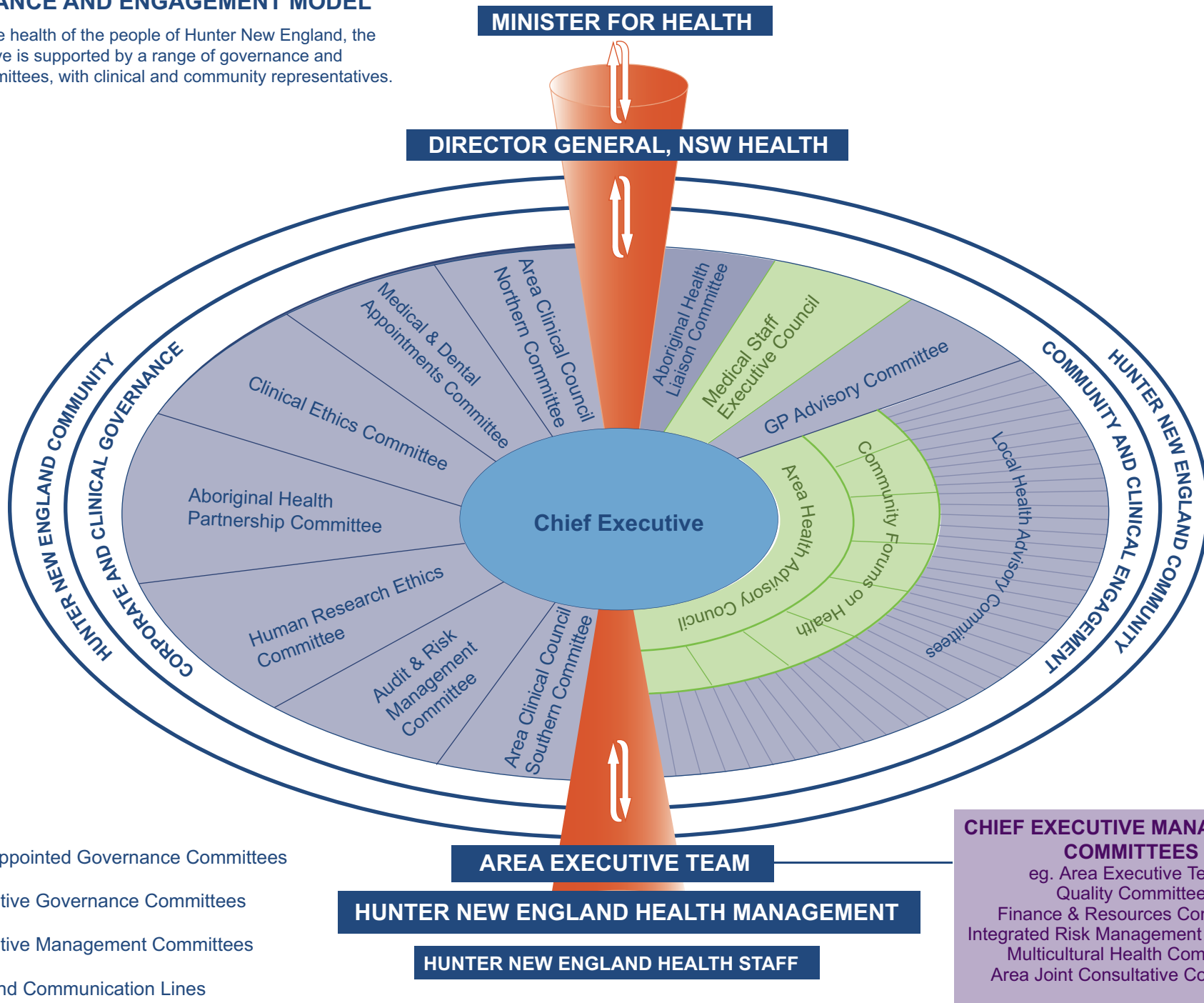


HUNTER NEW ENGLAND HEALTH GOVERNANCE AND ENGAGEMENT MODEL

To improve the health of the people of Hunter New England, the Chief Executive is supported by a range of governance and advisory committees, with clinical and community representatives.



KEY

- Externally Appointed Governance Committees
- Chief Executive Governance Committees
- Chief Executive Management Committees
- Reporting and Communication Lines